
4 Facility Recommendations

TVC Master Plan

McCool Carlson Green Architects

DRAFT

DRAFT

4 | Facility Recommendations

UAF’s Tanana Valley Campus plays a vital role in meeting workforce needs and serving as academic gateway to UAF for those living in the greater Fairbanks area and Interior Alaska. Demand for these services is growing—even in difficult economic times—especially in areas such as Allied Health and Nursing, Process Technology, Industrial Arts and Technologies, Applied Business and Accounting and in academic programs leading to the Associate of Arts. To meet this demand, significant investment is needed to renovate current TVC facilities that are inadequate and/or outdated and to meet anticipated need for training in high-growth, high-demand occupations that are essential to growing the Fairbanks and Alaskan economies.

The following recommendations are based on the planning committee’s work on the learning and organizational plan and are grounded in the analysis of TVC’s existing facilities and future needs. They are based upon a TVC organizational model described as a “hub and spoke” arrangement, which recognizes the central role of Tanana Valley Campus Center (604 Barnette Street) in providing administrative and core student services even as TVC expands program clusters at a distance from this hub. An example of such a program cluster is Hutchison Institute of Technology and the University Park Building. They house related TVC workforce development programs (in this example, Industrial Arts and Technologies) along with program-level student advising and support. In this plan, TVC envisions continuing to consolidate related programs into such clusters to meet expanding student needs, capitalize on program adjacencies, and achieve economies of scale. Figure 1 shows a current listing of such program clusters; this may change over time as new needs and circumstances emerge.

FIGURE 1: TVC PROGRAM CLUSTERS

<p>Allied Health Sciences Medical/Dental Assisting Nursing Certified Nursing Assistant Dental Assisting Dental Hygiene Healthcare Reimbursement Radiologic Technology</p>	<p>Applied Business, Professions, and Info Technology Applied Business Applied Accounting Administrative Assistant Academy Small Business Development Center Information Technology Specialist Paralegal Studies Law Enforcement Academy Cosmetology Construction Management Drafting Technology Professional Development</p>
<p>Early Childhood Education, Human Services, and General Academic Programs Early Childhood Education Child Development & Family Studies Early Childhood Lab School Developmental Education Human Services Associate of Arts Bachelor of Technology Recreation Community Education</p>	<p>Industrial Arts and Applied Technologies Automotive Technology Diesel/Heavy Equipment Process Technology Power Generation Instrumentation Safety/Health/Environmental Awareness Aviation Maintenance Technology Professional Piloting Fire Science/Emergency Services Culinary Arts Welding and Materials Technology</p>

As a result of the TVC facilities planning process, the following six major initiatives were identified and are expected to form the basis for more detailed plan development and funding requests:

1. Complete the renovation of Tanana Valley Campus Center (TVCC), 604 Barnette Street. Relocate to TVCC those programs currently at the Downtown Center/2nd Avenue.

In order to focus TVC's presence and reduce barriers for student success TVC's downtown operations should be consolidated in and around the Tanana Valley Campus Center at 604 Barnette. Space currently used in the Downtown Center/2nd Avenue should be returned to UAF. In exchange for releasing the Downtown Center space TVC should request full use of the University Park Site (see #3 UPark initiative below).

Consolidation at 604 Barnette supports the recently completed 'Vision Fairbanks Downtown Plan' by maintaining a visible presence in downtown Fairbanks and should spur development of the area that the plan refers to as the Barnette District. TVC's presence is enhanced by the existence of a university-owned parking garage located just across Barnette Street. Moreover, TVCC is adjacent to the State of Alaska's downtown office building, which includes the Fairbanks Job Center—a partner in meeting workforce needs in the community and region.

Tanana Valley Campus Center will continue to be the hub of TVC's operation--housing administration, Developmental Education, the TVC Learning Center, and the TVC Student Assistance and Advising Center. A top priority continues to be to complete renovation of the 4th floor Allied Health Regional Training Center—focus of a \$5M UAF capital funding request. In addition TVCC would house one or more program groupings that have strong ties to downtown, including Applied Business, Health and possibly Early Childhood Education. Full renovation of the 3rd and 4th floors of 604 Barnette is required, along with remaining projects on other floors enhancing heating, cooling, ventilation and other needs. Current estimates done by UAF Facilities put that cost at \$19.5 million.

2. Develop a new TVC Workforce Training Facility to address critical shortages in instructional space in Industrial Arts and Technology programs.

TVC's Industrial Arts & Technology programs are facing a critical shortage of space for classrooms, shops, computer and instrumentation labs, and storage. Currently, facilities are THE limiting factor in the following programs: Process Technology, Instrumentation, Welding, Diesel/Heavy Equipment, Safety/Health/Environmental Awareness, and Automotive Technology.

In the case of Process Technology—a high-growth, high-demand workforce program—faculty are utilizing space in three widely separated buildings: Hutchison Institute of Technology, TVC Automotive Technology Center, and the Downtown Center/2nd Avenue. Programs housed in a new TVC Workforce Training Center could include Process Technology, Diesel & Heavy Equipment, Welding, Health/Safety/Environmental Awareness, and Automotive Technology. A single new facility would need to be approximately 62,000 square feet of academic, administrative, shop, and storage space (see below). The estimated cost of the Workforce Training Center is \$36 million (2009 dollars), exclusive of land acquisition.

Industrial Arts & Technology		Net Program Area
1. Process Technology & Safety		14,773
2. Diesel/Heavy Equipment/Welding		18,155
3. Automotive Technology		11,676
Net Program Area Total		44,604
Circulation & Building Support Spaces	40%	17,842
Total Gross Building Area		62,446
Approximate New Space Cost/Sf (2009)	\$583	\$583
Approximate Total Project Cost (2009)		\$ 36,401,726

An optimum setting for the UAF/TVC Workforce Training Facility would be co-location with the new Pipeline Training Center currently under development in Fairbanks. This facility is being constructed to serve the growing needs of the oil and gas industry and prepare workers for construction of the natural gas pipeline. There would be a tremendous benefit to locating TVC's Workforce Training Center in close proximity to the new Pipeline Training Center. TVC's programs would supplement and support apprenticeship training for pipeline construction—including pre-training and related instruction such as math, English, and human relations. TVC would provide broad, in-depth educational programs while exposing TVC students to apprenticeship training programs and potential future employers. The Pipeline Training Center is just now under development and TVC management is in active discussions with its planning group. If co-location with the Pipeline Training Center is not feasible, other possible locations for the Workforce Training Center are in the vicinity of Hutchison Institute of Technology and the University Park Building or other nearby UAF property of sufficient size.

Related to this is the need for a longterm facility serving TVC's Automotive Technology Program. TVC currently leases an 8,000 sq. foot facility on Industrial Avenue. The longterm sustainability of this high-demand program will be greatly enhanced by securing an appropriate facility in university ownership that meets current and future needs.

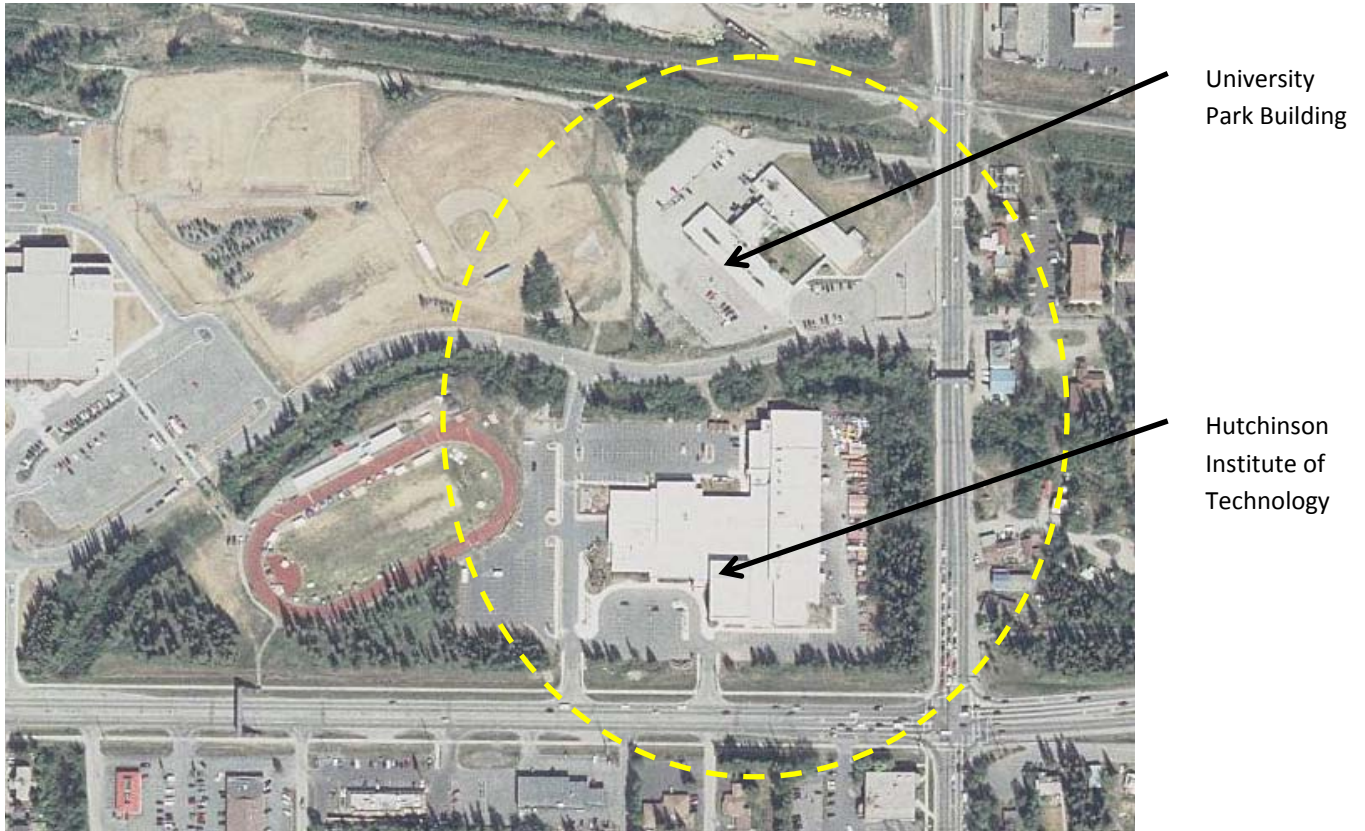
3. Build a new TVC facility on UAF's University Park (UPark) site, creating an integrated TVC campus with Hutchison Institute of Technology that enhances secondary-postsecondary partnerships and expands community access

Located just north of the Hutchinson Institute of Technology, the University Park property and building is an ideal location for TVC to expand its program cluster. Its adjacency to Hutch and West Valley High School create opportunities for interaction with high school students, providing them with expanded program opportunities and career awareness. Located near the main UAF campus, this is a logical location for programs that interact regularly with UAF programs from the main campus. For example, TVC's "911 Responder programs" including Fire Science, Law Enforcement Academy, and Paramedic Academy are linked with the University Fire Department and other campus programs and services. Their joint location at the UPark site facilitates this interaction. The site is already served by university utilities and is located on a major arterial allowing ease of access and space for ample parking.

To effectively create this Program Cluster TVC will need the use of significant portion of the UPark site. The plan for the UPark site will also address the needs of other UAF units requiring community access. Possible programs that could be located at a new UPark facility include those already present: Emergency Services, Fire Science, Paramedic Academy, and Law Enforcement which would require approximately 18,000 sf. Other programs that might also be located in a new facility there include: Industrial Arts, Early Childhood Education & Child



Development/Family Studies, Drafting Technology and Construction Management. TVC's space at the Hutchinson Center should be retained and enhanced as an integral part of this Program Cluster. Any space that becomes available at Hutch due to relocation of current TVC programs should be repurposed to support other TVC programs.



Depending on program needs and the condition of the existing structure this program cluster could be created by renovation of existing space or demolition of the existing structure and construction of new program space. The existing structure has 41,720 gross square feet of area. Construction costs will depend on the requirements of the actual programs selected for this site and the usability and condition of the existing building. Attention could be given to combining the Hutchison and UPark site facilities into one integrated campus that optimizes use of common facilities, enhances the learning and student life environment, and presents a quality image of UAF and TVC.

4. Purchase properties adjacent to or nearby existing TVC facilities consistent with the “hub and cluster” model as opportunities arise, with special emphasis on those adjacent to Tanana Valley Campus Center

TVC’s facilities needs will inevitably change over time in response to dynamic community education and training priorities. This nimble approach should be extended to investments in adjacent properties, especially those near Tanana Valley Campus Center and the nearby parking garage.

TVC should invest in contiguous and/or adjacent properties along Barnette and nearby streets as they become available in order to accommodate future program growth. There are a number of older, underutilized properties surrounding 604 Barnette that should be considered for acquisition.



5. Move expanded TVC Aviation Programs to Fairbanks International Airport

Current aviation maintenance and professional piloting programs are housed at the Hutchinson Institute of Technology. This space is suitable for current programs but cannot meet future needs without access to the airport and operational aircraft; without this move implementing a robust professional piloting program is impossible. Relocating aviation programs to a site with access to the airport runways would allow for a more comprehensive TVC program to meet community and state aviation needs. No existing structure for such a move appears to exist so new construction and/or lease of a newly-designed facility will be required. Potential partnerships with current airport management and businesses should be explored.

6. Expand the UAF/TVC Early Childhood Lab School and campus-wide childcare services. Consider co-locating these with Early Childhood Education and related academic programs.

TVC’s Bunnell House Early Childhood Lab School meets an important need in providing university ECE students with practicum opportunities. It also provides convenient quality childcare for the main campus. But the current lab school facility is quite old and limited in size; it is not convenient for students using TVC’s downtown facilities. Even as TVC maintains a lab school for academic purposes, it should engage with others in the community to identify options for expanding the lab school and quality childcare services to meet the diverse needs of the university community. Such an expansion should consider co-location of lab school with ECE and related academic programs the maximize opportunities for direct collaboration.